

Arizona Medical Board

Arizona Budget System (ABS)

FY 2026



Arizona Medical Board

1740 W. Adams, Phoenix, AZ 85007 • website: www.azmd.gov
Phone (480) 551-2700 • Toll Free (877) 255-2212 • Fax (480) 551-2707

Governor

Katie Hobbs

Members

Gary R. Figge, M.D.
Chair
Physician Member

Bruce A. Bethancourt, MD
Vice-Chair
Physician Member

Lois E. Krahn, M.D.
Secretary
Physician Member

Katie S. Artz, M.D.
Physician Member

Jodi Bain, Esq.
Public Member

David Beyer, MD
Physician Member

Laura Dorrell, M.S.N., R.N.
Public Member/RN

R. Screven Farmer, M.D.
Physician Member

James Gillard, M.D., M.S.
Physician Member

Pamela E. Jones
Public Member

Constantine G. Moschonas, MD
Physician Member

Executive Director

Patricia E. McSorley

August 20, 2024

The Honorable Katie Hobbs
Governor of Arizona
State Capitol
1700 W. Washington Street
Phoenix, AZ 85007

Dear Governor Hobbs:

This letter accompanies the Agency's Fiscal Year ("FY") 2024- 2025 BUDDIES submittal for the Revenue Schedules, Sources and Uses Statement, Administrative Costs, Agency Summary, Program Summary, Program Budget Unit Summary, and Operating Schedules.

The number of licensees regulated by the Arizona Medical Board and the Arizona Regulatory Board of Physician Assistant continues to grow and Staff is responsible for the licensing and regulation of over 36,000 licensees. The total number of physicians licensed in FY 24 was 31,152 with an increase from 29,421 licensed in FY23, representing a 5.8% increase of licensed physicians in Arizona. The number of licensed physician assistants in FY 23 was 4,616 increasing to 5009 in FY24 for an 18.17% increase.

The continued growth of these licensed health professionals in Arizona has increased the workload for Staff Investigators and has made it more difficult for investigations to be completed within the 180-days recommended by the Auditor General. While investigative processes have been reviewed and streamlined, the Investigations Department remains short-staffed and without an adequate number of investigators to meet the goal of completing cases within 180 days. The Agency is grateful that the Legislature approved an additional appropriation for FY 25 of \$174,000.00 to hire two additional investigators. The original request in FY 25 was for funding for four investigators, and it is the intent of the Agency to request funding in FY26 for two additional investigators.

The Agency submits the attached decision package for additional funding:

Decision Package 1- Request for Increased Appropriations to Employ Additional Investigators (See Attachment A.)

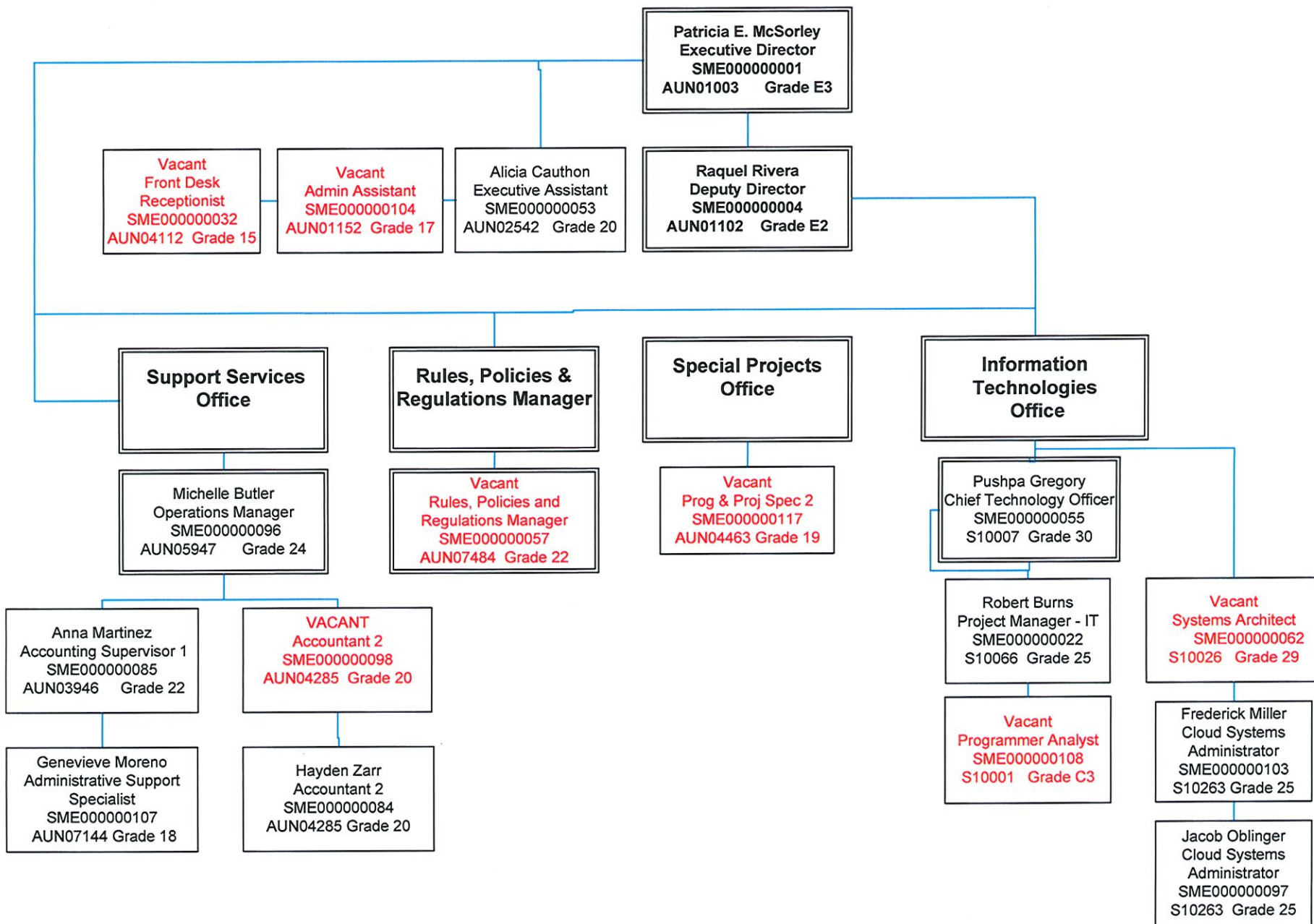
With your approval and support, the Agency will continue its pursuit to fulfill its mission to protect the public, while continually seeking opportunities to improve processes, offer superior customer service and ensure due process by compliance with all relevant rules and statutes.

Respectfully submitted,

Patricia E. McSorley
Executive Director
Arizona Medical Board
Arizona Regulatory Board of Physician Assistants

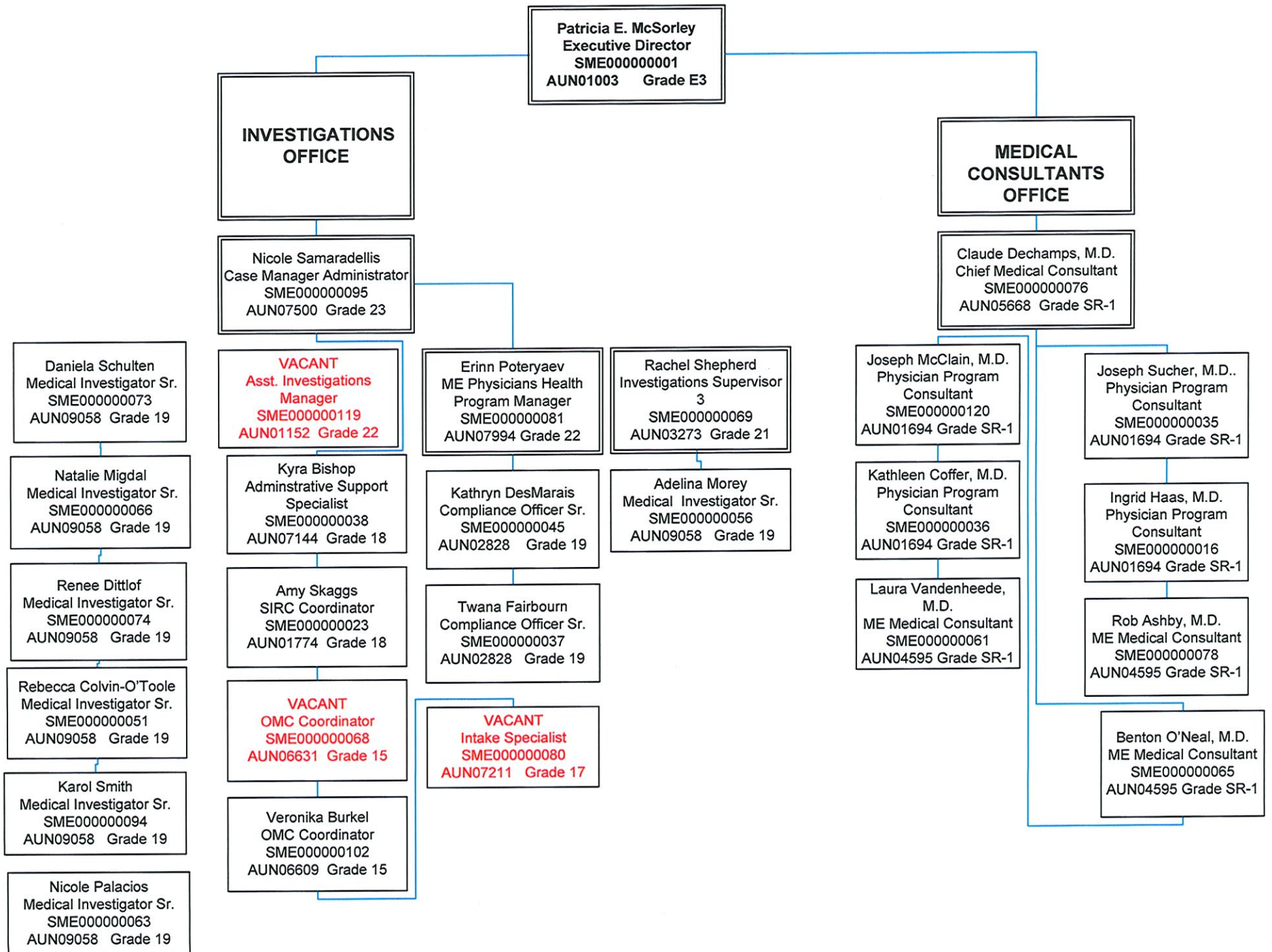
Arizona Medical Board and Arizona Regulatory Board of Physician Assistants

August 19, 2024



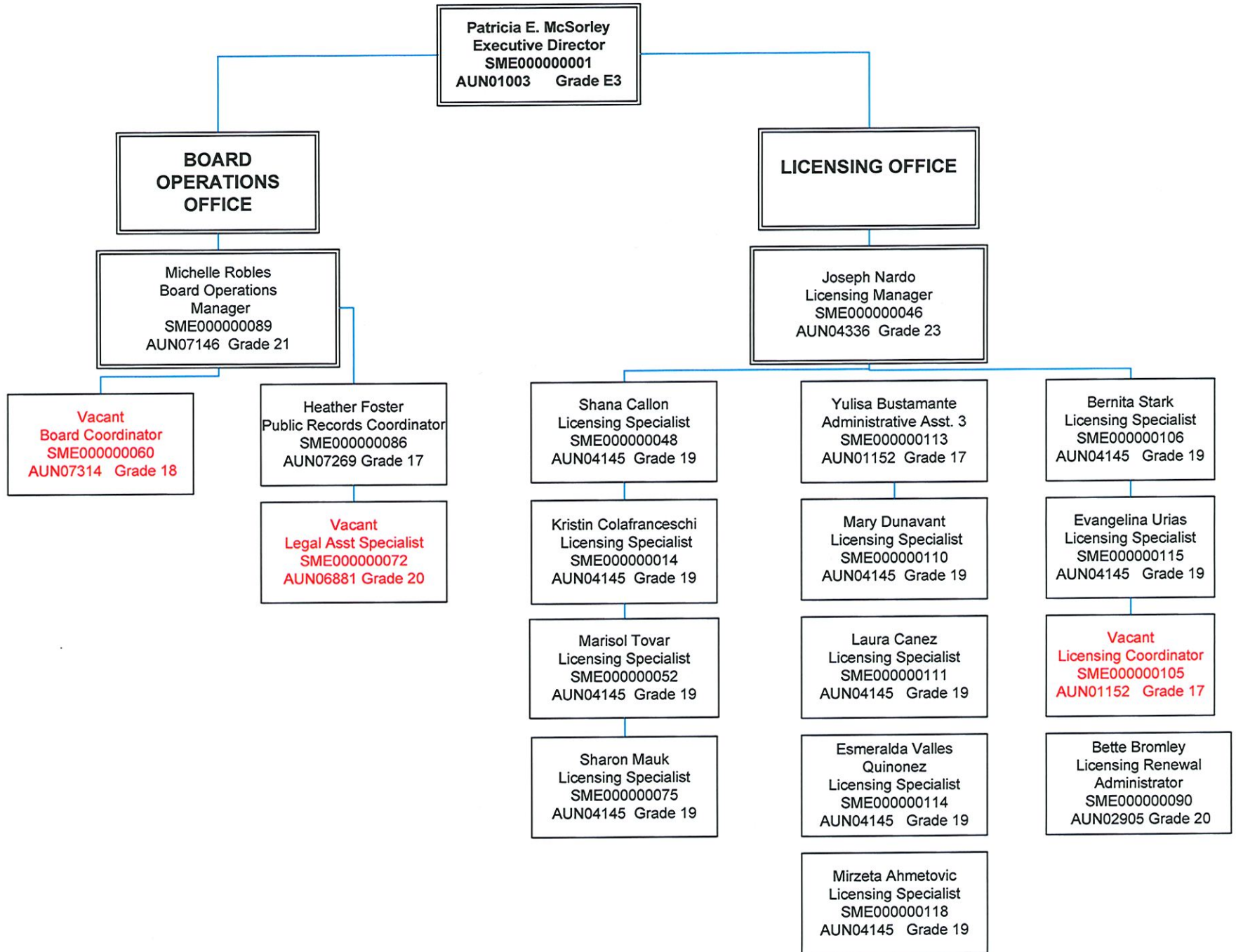
Arizona Medical Board and Arizona Regulatory Board of Physician Assistants

August 19, 2024



Arizona Medical Board and Arizona Regulatory Board of Physician Assistants

August 19, 2024





State of Arizona Budget Request

State Agency

Arizona Medical Board

A.R.S. Citation: A.R.S. §§ 32-1401 et seq. and A.R.S. §§ 32-2501 et seq.

Governor Hobbs:

This and the accompanying budget schedules, statements and explanatory information constitute the operating budget request for this agency for Fiscal Year 2026.

To the best of my knowledge all statements and explanations contained in the estimates submitted are true and correct.

Appropriated Funds

Total Amount Requested:

Medical Examiners Board Fund

Non-Appropriated Funds

Arizona Medical Board Total:

	FY 2025 Expenditure Plan	FY 2026 Funding Issue	FY 2026 Total Request
Total Amount Requested:	8,424.9	174.0	8,598.9
Medical Examiners Board Fund	8,424.9	174.0	8,598.9
	-	-	-
Arizona Medical Board Total:	8,424.9	174.0	8,598.9

Agency Head: Patricia E. McSorley

Title: Executive Director

Patricia McSorley 9/3/2024

(signature)

Phone: 480-551-2720

Prepared by: Michelle Butler

Email Address: Michelle.Butler@azmd.gov

Date Prepared: September 3, 2024

Revenue Schedule

Agency: Arizona Medical Board

Fund: AA1000 General Fund

AFIS Code	Category of Receipt and Description	FY 2024 Actuals	FY 2025 Estimate	FY 2026 Request
4339	Other Fees & Charges for Services	7.6	7.9	8.3
4372	Publications & Reproductions	1.7	1.8	1.9
4415	Occupational & Professional Licenses	844.9	887.2	931.5
4419	Other Licenses	21.7	22.8	23.9
4449	Other Fees	180.9	190.0	199.5
4519	Other Fines, Forfeitures, Penalties and Liquidated Damages	27.2	28.6	30.0
4645	Payment Card Transaction Fees Paid	(1.8)	(1.9)	(1.9)
4821	Prior Year Reimbursements (Refunds)	0.2	0.2	0.2
General Fund Total:		1,082.5	1,136.6	1,193.4

Forecast Methodology

Fund: ME2038 Medical Examiners Board Fund

AFIS Code	Category of Receipt and Description	FY 2024 Actuals	FY 2025 Estimate	FY 2026 Request
4339	Other Fees & Charges for Services	64.9	66.8	68.8
4372	Publications & Reproductions	15.7	16.2	16.7
4415	Occupational & Professional Licenses	7,612.1	7,840.5	8,075.7
4419	Other Licenses	190.3	196.0	201.9
4449	Other Fees	1,640.5	1,689.7	1,740.4
4519	Other Fines, Forfeitures, Penalties and Liquidated Damages	175.8	181.1	186.5
4645	Payment Card Transaction Fees Paid	(203.7)	(200.0)	(200.0)
4821	Prior Year Reimbursements (Refunds)	1.4	1.5	1.5
Medical Examiners Board Fund Total:		9,497.1	9,791.8	10,091.5

Forecast Methodology

Revenue Projection and Justification

The Arizona Medical Board anticipates an approximate increase of \$533,000.00. This increase is based on the increase in the number of applicants and renewals that are anticipated. The approximate revenue that we anticipate for MD & PA Licenses and renewals is \$7,738,000.00 and \$1,079,000.00 respectively.

Forecast Methodology:

The Arizona Medical Board forecast methodology is based on a increase of 3% year over year for the Medical Board ME2038 and a 5% increase for the General Fund 1000. This increase is consistent with the boards growing licensee base and prior years revenue as well. The increase to the General Fund includes the additional 5% remitted to the fund per HB2910.

Agency	Agency Name	Fund	Fund Name	Object	Object Name	FY 2024 Actuals	FY 2025 Estimate	FY 2026 Budget	FY 2027 Estimate	FY 2028 Estimate	Comments
MEA	Arizona Medical Board	ME2038	Medical Examiners Board Fund	4339	Other Fees & Charges for Services	64,890	66,837	68,842	70,907	73,034	
MEA	Arizona Medical Board	ME2038	Medical Examiners Board Fund	4372	Publications & Reproductions	15,725	16,197	16,683	17,183	17,699	
MEA	Arizona Medical Board	ME2038	Medical Examiners Board Fund	4415	Occupational & Professional Licenses	7,612,139	7,840,503	8,075,718	8,317,990	8,567,530	
MEA	Arizona Medical Board	ME2038	Medical Examiners Board Fund	4419	Other Licenses	190,283	195,991	201,871	207,927	214,165	
MEA	Arizona Medical Board	ME2038	Medical Examiners Board Fund	4449	Other Fees	1,640,450	1,689,664	1,740,353	1,792,564	1,846,341	
MEA	Arizona Medical Board	ME2038	Medical Examiners Board Fund	4519	Other Fines, Forfeitures, Penalties and Liquidated Damages	175,805	181,079	186,512	192,107	197,870	
MEA	Arizona Medical Board	ME2038	Medical Examiners Board Fund	4645	Payment Card Transaction Fees Paid	-203,672	-200,000	-200,000	-200,000	-200,000	
MEA	Arizona Medical Board	ME2038	Medical Examiners Board Fund	4821	Prior Year Reimbursements (Refunds)	1,445	1,488	1,533	1,579	1,626	

Note: Actuals obtained from AZ360 report, estimates based on a baseline 3% year increase (based on licensee base growth rate) with the exception of credit card transaction fees.

Agency	Agency Name	Fund	Fund Name	Object	Object Name	FY 2024 Actuals	FY 2025 Estimate	FY 2026 Budget	FY 2027 Estimate	FY 2028 Estimate	Comments
MEA	Arizona Medical Board	AA1000	General Fund	4339	Other Fees & Charges for Services	7,552	7,930	8,326	8,742	9,180	
MEA	Arizona Medical Board	AA1000	General Fund	4372	Publications & Reproductions	1,747	1,834	1,926	2,022	2,123	
MEA	Arizona Medical Board	AA1000	General Fund	4415	Occupational & Professional Licenses	844,940	887,187	931,546	978,124	1,027,030	
MEA	Arizona Medical Board	AA1000	General Fund	4419	Other Licenses	21,693	22,778	23,917	25,112	26,368	
MEA	Arizona Medical Board	AA1000	General Fund	4449	Other Fees	180,925	189,971	199,470	209,443	219,915	
MEA	Arizona Medical Board	AA1000	General Fund	4519	Other Fines, Forfeitures, Penalties and Liquidated Damages	27,241	28,603	30,033	31,535	33,112	
MEA	Arizona Medical Board	AA1000	General Fund	4645	Payment Card Transaction Fees Paid	-1,767	-1,855	-1,948	-2,046	-2,148	
MEA	Arizona Medical Board	AA1000	General Fund	4821	Prior Year Reimbursements (Refunds)	161	169	178	186	196	

Note: Actuals obtained from AZ360 report, estimates based on a baseline 5% year increase (based on licensee base growth rate and increase of revenue remitted to the GF per HB2910).

Sources and Uses

Agency: Arizona Medical Board

Fund: ME2038 Medical Examiners Board Fund

Funds are used to license, regulate, and conduct examinations of medical doctors and physician's assistants. Revenues are provided by the monies collected by the Board from the examination and licensing of physicians and physician assistants.

Cash Flow Summary	FY 2024 Actuals	FY 2025 Estimate	FY 2026 Request
Beginning Balance	11,536.9	3,440.1	4,632.0
Revenue (from Revenue Schedule)	9,497.1	9,791.8	10,091.5
Total Available	21,034.0	13,231.9	14,723.5
Total Appropriated Disbursements	17,593.9	8,599.9	8,598.9
Total Non-Appropriated Disbursements	-	-	-
Balance Forward to Next Year	3,440.1	4,632.0	6,124.6

Explanation for Negative Ending Balance(s): Arizona Medical Board

Appropriated Expenditure	FY 2024 Actuals	FY 2025 Estimate	FY 2026 Request
Expenditure Categories			
Personal Services	3,580.5	3,915.2	4,089.2
Employee Related Expenditures	1,276.6	1,578.6	1,578.6
Professional & Outside Services	1,714.1	1,305.0	1,305.0
Travel In-State	18.1	13.0	13.0
Travel Out-Of-State	11.9	13.0	13.0
Food	-	-	-
Aid To Organizations & Individuals	-	-	-
Other Operating Expenditures	1,327.5	1,544.7	1,544.7
Equipment	-	-	-
Capital Outlay	-	-	-
Capital Equipment	-	55.4	55.4
Non-Capital Equipment	190.0	-	-
Debt Service	-	-	-
Cost Allocation & Indirect Costs	-	-	-
Transfers-Out	-	-	-
Appropriated Expenditure Sub-Total:	8,118.7	8,424.9	8,598.9
Non-Lapsing Authority from Prior Years	-	-	-
Administrative Adjustments	175.2	175.0	-
Capital Projects (Land, Bldgs, Improv)	-	-	-
Appropriated 27th Pay Roll	-	-	-
Legislative Fund Transfers	9,300.0	-	-
IT Project Transfers	-	-	-

Sources and Uses

Agency:	Arizona Medical Board
----------------	------------------------------

Fund:	ME2038 Medical Examiners Board Fund
--------------	--

Proposed Fund Transfer	-	-	-
Residual Equity Transfer	-	-	-
Transfer Due to Fund Balance Cap	-	-	-
Prior Committed or Obligated Expenditures (no entry for AY)	-	-	-
Non-Appropriated 27th Pay Roll	-	-	-
Appropriated Expenditure Total:	17,593.9	8,599.9	8,598.9
Appropriated FTE	48.0	63.5	63.5

Non-Appropriated Expenditure

	FY 2024 Actuals	FY 2025 Estimate	FY 2026 Request
Expenditure Categories			
Personal Services	-	-	-
Employee Related Expenditures	-	-	-
Professional & Outside Services	-	-	-
Travel In-State	-	-	-
Travel Out-Of-State	-	-	-
Food	-	-	-
Aid To Organizations & Individuals	-	-	-
Other Operating Expenditures	-	-	-
Equipment	-	-	-
Capital Outlay	-	-	-
Capital Equipment	-	-	-
Non-Capital Equipment	-	-	-
Debt Service	-	-	-
Cost Allocation & Indirect Costs	-	-	-
Transfers-Out	-	-	-
Non-Appropriated Expenditure Sub-Total:	-	-	-
Non-Lapsing Authority from Prior Years	-	-	-
Administrative Adjustments	-	-	-
Capital Projects (Land, Bldgs, Improv)	-	-	-
Appropriated 27th Pay Roll	-	-	-
Legislative Fund Transfers	-	-	-
IT Project Transfers	-	-	-
Proposed Fund Transfer	-	-	-
Residual Equity Transfer	-	-	-
Transfer Due to Fund Balance Cap	-	-	-
Prior Committed or Obligated Expenditures (no entry for AY)	-	-	-

Sources and Uses

Agency: Arizona Medical Board

Fund: ME2038 Medical Examiners Board Fund

Non-Appropriated 27th Pay Roll	-	-	-
Non-Appropriated Expenditure Total:	-	-	-
Non-Appropriated FTE	-	-	-

Funding Issue List

Agency: Arizona Medical Board

FY 2026

Priority	Funding Issue Title	Total FTE	Total Amount	General Fund	Other Appropriated Funds	Non-Appropriated Funds
1	Additional Investigators Request	-	174.0	-	174.0	-
Total:		-	174.0	-	174.0	-

Funding Issue Detail

Agency: Arizona Medical Board

Issue: 1 Additional Investigators Request

Calculated ERE:
Uniform Allowance:

Program: Licensing, Regulation, & Rehabilitation
Fund: ME2038 Medical Examiners Board Fund (Appropriated)

	Expenditure Categories	FY 2026
6000	Personal Services	174.0
	Subtotal Personal Services and ERE	174.0
	Program/Fund Total:	174.0

Funding Issue Narrative

Agency: Arizona Medical Board

Issue: 1 Additional Investigators Request

Description of Issue: The Investigations Department (“Investigations”) of the Arizona Medical Board and the Arizona Regulatory Board of Physician Assistants (“the Agency”) is crucial to the Board’s mission to protect the public. The Board is responsible for the regulation of 31,154 licensed MDs and 5,015 physician assistants and provides thorough investigations of complaints alleging violations of the Arizona Medical Practice Act and the Physician Assistants’ Practice Act. Complaints may involve a variety of unprofessional acts, including, but not limited to allegations of improper care resulting in patient harm, inappropriate prescribing of medications, billing violations, competency concerns, health issues that may impact one’s safety to practice and sexual misconduct allegations.

Currently, Investigations (excluding the compliance staff) consists of 8 FTES for staff investigators; however, there are 2 vacancies that are in the process of being filled

Proposal*:
The Agency is requesting an additional appropriation in FY 2026 to fund and employ 2 additional FTEs for investigator positions for complaint handling and investigations; thereby, bringing the total to 12 investigators dedicated to complaint investigation. As previously stated, the goal in asking for additional investigative staff and funding is to reduce the caseload of investigators, to allow for increased training and mentoring of new investigators, and to reduce the number of days to complete an investigation.

After reading the Auditor General’s Sunset Review Reports for other health regulatory boards (Dental Board, Naturopathic Physicians Medical Board, Board of Nursing and Board of Psychologist Examiners), all four reports issued by the Auditor General identified complaints that were not resolved within the desired 180 days. The Auditor General recommended, in most instances, that the boards employ a sufficient number of investigators to reduce the number of days to complete a case. Please see the following Auditor General recommendation related to adequate staffing:

? That the Dental Board assess the impact of its current number of contracted investigators on its complaint-resolutions timeliness and take action as need to ensure it has sufficient number of investigators to resolve complaints within 180 days.
Performance and Audit and Sunset Review Report 22-110, September 2022, at www.azauditor.gov

? That the Naturopathic Physicians Medical Board investigate and resolve complaints within 180 days by developing and implementing time frames for completing all key steps in its complaint handling process and monitoring its performance against these time frames.
Performance and Audit and Sunset Review Report 22-104, June 2022, at www.azauditor.gov

? That the Board of Nursing investigate and adjudicate complaints within 180 days and determine if it needs additional resources to do so.
Performance and Audit and Sunset Review Report 21-111, September 2021, at www.azauditor.gov

? That the Board of Psychological Examiners should revise its complaint handling policies and procedures to assign an appropriate complaint-investigation priority for claims that become complaints and continue to implement its newly developed procedures and practices designed to improve its complaint-handling timeliness. Adding that lengthy claims review can put the public at risk because psychologists alleged to have violated Board statutes and rules may continue to practice while under review even though they may be unfit to do so and/or may need supervision.
Auditor General Report, Arizona Board of Psychologist Examiners, Report 19-104

In response to these recommendations, the health regulatory boards assert that with adequate funding and additional staff that complaint processing times would be reduced.

Proposal: The Agency requests an additional appropriation in FY 2026 of \$174,000 to employ 2 investigators with a salary of \$60,000 each with an ERE of \$20,000.

Alternatives Considered:

1. Review and streamlining of processes to lessen the administrative tasks for investigators. Despite streamlining, the Investigations Department does not have adequate Investigative Staff to address complaint handling.
2. Use of Contract employees
Currently, Investigations (excluding the compliance staff) consists of 8 FTES for staff investigators; however, there are 2 vacancies that are in the process of being filled. In FY 24, in lieu of hiring two FTEs the Agency opted to hire two temporary paralegals to perform investigative tasks. The Agency has found that the temp to hire route for this position to be the best way to proceed with its staffing needs. If the temporary employee is not successfully performing the investigative duties after receiving adequate training, the contract with the temporary employee is easily terminated by the Agency.
While contracting employees for investigator positions gives the Agency an edge in determining whether the contractor has the skills and the potential to successfully fill the position, this is a short term fix. Ultimately, the goal is to have state employees with a commitment to long-term employment so that the training expense and effort brings a long-term solution to appropriately staff of the department. With the appropriation received in FY 25, two investigator positions will be filled and in FY 26 funding to hire an additional two investigators is needed to reduce the days to complete an investigation.

Funding Issue Narrative

Agency: Arizona Medical Board

Issue: 1 Additional Investigators Request

Impact of Not Funding This Year:

There are currently 1,105 open investigations, which averages to over 100 cases per investigator. To assist with the large caseload, the investigation managers also continue to investigate cases in addition to directing, reviewing, and training staff. The goal is to obtain additional investigators to assist with the high volume of quality-of-care complaints, which take significant amount of effort to both gather information and obtain a medical consultant to review the case for the Board. In order to meet this goal, the Agency is requesting an additional appropriation in FY 2026 of \$174,000 to employ 2 additional investigators.

In FY 2024, Investigations experienced the departure of 2 investigators. In FY 2023, 1 investigator resigned and relocated. In FY 2022, 4 investigators resigned, which included 2 investigators who left for higher compensation.

The current salary for an investigator position ranges from \$60,000 to \$68,000 based on experience and credentials. The hiring process for new investigators has been difficult based on the small number of interested and qualified individuals applying for the position, at the salary offered. It must be noted that medical investigators require significant training prior to certification and must demonstrate organizational skills, analytical/problem solving skills, critical thinking, effective written communication, and be proficient at interviewing others. Many of these investigative skills, particularly those of a new employee, may need to be developed and refined with on-the-job training to successfully address medical board cases. All investigations are conducted with the knowledge that any investigative case may result in litigation and the work of the investigator must withstand scrutiny, including potential cross-examination in a future legal proceeding. It is rare that a physician under investigation does not engage legal representation after receiving a board complaint; therefore, the work of the investigator must be on par with the physician's counsel.

The 2024 Employee Engagement Survey responses indicate a growing discontent amongst the investigative staff who reported being overwhelmed by the high volume of cases. In addition to high volume of cases, the complexity of cases investigated has also increased, which is reflected in the increase in the average number of days to complete an investigation and the increase in disciplinary actions issued by the Board in FY 2024. Statistics for caseload 3-year history in Investigations are below:

Cases opened:

MD

2022 1,233

2023 1,160

2024 1,301

PA

2022 116

2023 105

2024 129

Cases closed:

MD

2022 1,156

2023 1,093

2024 1,111

PA

2022 104

2023 106

2024 84

Average # of days to complete an investigation:

MD

2022 188

2023 240

2024 264

PA

2022 178

2023 206

2024 240

Statutory Reference:

Equipment to be Purchased (if applicable):

Classification of New Positions:

Annualization(s):

Funding Issue Narrative

Agency: Arizona Medical Board

Issue: 1 Additional Investigators Request

Alignment with Agency's Strategic Plan or Statutory Responsibilities:

Impact on Historically Underserved, Marginalized, or Adversely Affected Groups:

How has feedback been incorporated from groups directly impacted by proposal?:

Description of how this furthers the Governor's priorities:

Impact on historically underserved, marginalized, or adversely affected groups*:
The public is the mostly adversely affected group when the closure of the investigation is delayed due to lack of adequate staff. If there is a violation of the standard of care by the physician found in the investigation, the matter is delayed in getting to the Board for adjudication

Feedback from the Legislature and the Auditor General to complete investigations within 180 days has been incorporated and considered in the request for additional funding to increase the number of staff investigators.

Summary of Expenditure and Budget Request for All Funds

Agency: Arizona Medical Board

Appropriated Funds	FY 2024 Actuals	FY 2025 Expenditure Plan	FY 2026 Funding Issue	FY 2026 Total Request
Program:				
MEA-1-0 Licensing, Regulation, & Rehabilitation	8,118.7	8,424.9	174.0	8,598.9
Appropriated Funds Total:	8,118.7	8,424.9	174.0	8,598.9
Expenditure Categories				
FTE	48.0	63.5	-	63.5
Personal Services	3,580.5	3,915.2	174.0	4,089.2
Employee Related Expenditures	1,276.6	1,578.6	-	1,578.6
Subtotal Personal Services and ERE	4,857.1	5,493.8	174.0	5,667.8
Professional & Outside Services	1,714.1	1,305.0	-	1,305.0
Travel In-State	18.1	13.0	-	13.0
Travel Out-Of-State	11.9	13.0	-	13.0
Other Operating Expenditures	1,327.5	1,544.7	-	1,544.7
Capital Equipment	-	55.4	-	55.4
Non-Capital Equipment	190.0	-	-	-
Expenditure Categories Total:	8,118.7	8,424.9	174.0	8,598.9
Arizona Medical Board Total for All Funds:	8,118.7	8,424.9	174.0	8,598.9

Appropriated and Non-Appropriated	FY 2024 Actuals	FY 2025 Expenditure Plan	FY 2025 Funding Issue	FY 2026 Total Request
MEA-1-0 Licensing, Regulation, & Rehabilitation	8,118.7	8,424.9	174.0	8,598.9
Arizona Medical Board Total for All Funds:	8,118.7	8,424.9	174.0	8,598.9

Summary of Expenditure and Budget Request for Selected Funds

Agency:	Arizona Medical Board
----------------	------------------------------

Fund:	ME2038 Medical Examiners Board Fund (Appropriated)
--------------	---

	FY 2024 Actuals	FY 2025 Expenditure Plan	FY 2026 Funding Issue	FY 2026 Total Request
Program:				
MEA-1-0 Licensing, Regulation, & Rehabilitation	8,118.7	8,424.9	174.0	8,598.9
Medical Examiners Board Fund (Appropriated)	8,118.7	8,424.9	174.0	8,598.9
Summary Total:				
Expenditure Categories				
FTE	48.0	63.5	-	63.5
Personal Services	3,580.5	3,915.2	174.0	4,089.2
Employee Related Expenditures	1,276.6	1,578.6	-	1,578.6
Subtotal Personal Services and ERE	4,857.1	5,493.8	174.0	5,667.8
Professional & Outside Services	1,714.1	1,305.0	-	1,305.0
Travel In-State	18.1	13.0	-	13.0
Travel Out-Of-State	11.9	13.0	-	13.0
Other Operating Expenditures	1,327.5	1,544.7	-	1,544.7
Capital Equipment	-	55.4	-	55.4
Non-Capital Equipment	190.0	-	-	-
Expenditure Categories Total:	8,118.7	8,424.9	174.0	8,598.9

Program Budget Unit Summary of Expenditure and Budget Request for All Funds

Agency: Arizona Medical Board

	FY 2024 Actuals	FY 2025 Expenditure Plan	FY 2026 Funding Issue	FY 2026 Total Request
Program: MEA-1-0 Licensing, Regulation, & Rehabilitation				

Expenditure Categories

FTE	48.0	63.5	-	63.5
Personal Services	3,580.5	3,915.2	174.0	4,089.2
Employee Related Expenditures	1,276.6	1,578.6	-	1,578.6
Subtotal Personal Services and ERE	4,857.1	5,493.8	174.0	5,667.8
Professional & Outside Services	1,714.1	1,305.0	-	1,305.0
Travel In-State	18.1	13.0	-	13.0
Travel Out-Of-State	11.9	13.0	-	13.0
Other Operating Expenditures	1,327.5	1,544.7	-	1,544.7
Capital Equipment	-	55.4	-	55.4
Non-Capital Equipment	190.0	-	-	-
Expenditure Categories Total:	8,118.7	8,424.9	174.0	8,598.9

Fund Source

Appropriated Funds				
Medical Examiners Board Fund (Appropriated)	8,118.7	8,424.9	174.0	8,598.9
Appropriated Funds Total:	8,118.7	8,424.9	174.0	8,598.9
Licensing, Regulation, & Rehabilitation Total:	8,118.7	8,424.9	174.0	8,598.9

Sub Program: MEA-1-1 Licensing, Regulation, & Rehabilitation

Expenditure Categories

FTE	48.0	63.5	-	63.5
Personal Services	3,580.5	3,915.2	174.0	4,089.2
Employee Related Expenditures	1,276.6	1,578.6	-	1,578.6
Subtotal Personal Services and ERE	4,857.1	5,493.8	174.0	5,667.8
Professional & Outside Services	1,714.1	1,305.0	-	1,305.0
Travel In-State	18.1	13.0	-	13.0
Travel Out-Of-State	11.9	13.0	-	13.0
Other Operating Expenditures	1,327.5	1,544.7	-	1,544.7
Capital Equipment	-	55.4	-	55.4

Program Budget Unit Summary of Expenditure and Budget Request for All Funds

Agency:	Arizona Medical Board
----------------	------------------------------

	FY 2024 Actuals	FY 2025 Expenditure Plan	FY 2026 Funding Issue	FY 2026 Total Request
Program: MEA-1-0 Licensing, Regulation, & Rehabilitation				
Sub Program: MEA-1-1 Licensing, Regulation, & Rehabilitation				
Non-Capital Equipment	190.0	-	-	-
Expenditure Categories Total:	8,118.7	8,424.9	174.0	8,598.9
Fund Source				
Appropriated Funds				
Medical Examiners Board Fund (Appropriated)	8,118.7	8,424.9	174.0	8,598.9
Appropriated Funds Total:	8,118.7	8,424.9	174.0	8,598.9
Licensing, Regulation, & Rehabilitation Total:	8,118.7	8,424.9	174.0	8,598.9

Program Budget Unit Summary of Expenditure and Budget Request for Selected Funds

Agency: Arizona Medical Board

	FY 2024 Actuals	FY 2025 Expenditure Plan	FY 2026 Funding Issue	FY 2026 Total Request
--	--------------------	--------------------------------	--------------------------	--------------------------

Program: MEA-1-0 Licensing, Regulation, & Rehabilitation

Fund: ME2038 Medical Examiners Board Fund

Appropriated

Personal Services	3,580.5	3,915.2	174.0	4,089.2
Employee Related Expenditures	1,276.6	1,578.6	-	1,578.6
Subtotal Personal Services and ERE	4,857.1	5,493.8	174.0	5,667.8
Professional & Outside Services	1,714.1	1,305.0	-	1,305.0
Travel In-State	18.1	13.0	-	13.0
Travel Out-Of-State	11.9	13.0	-	13.0
Other Operating Expenditures	1,327.5	1,544.7	-	1,544.7
Capital Equipment	-	55.4	-	55.4
Non-Capital Equipment	190.0	-	-	-
Expenditure Categories Total:	8,118.7	8,424.9	174.0	8,598.9
Medical Examiners Board Fund Total:	8,118.7	8,424.9	174.0	8,598.9
Program Total for Select Funds:	8,118.7	8,424.9	174.0	8,598.9

Sub Program: MEA-1-1 Licensing, Regulation, & Rehabilitation

Fund: ME2038 Medical Examiners Board Fund

Appropriated

Personal Services	3,580.5	3,915.2	174.0	4,089.2
Employee Related Expenditures	1,276.6	1,578.6	-	1,578.6
Subtotal Personal Services and ERE	4,857.1	5,493.8	174.0	5,667.8
Professional & Outside Services	1,714.1	1,305.0	-	1,305.0
Travel In-State	18.1	13.0	-	13.0
Travel Out-Of-State	11.9	13.0	-	13.0
Other Operating Expenditures	1,327.5	1,544.7	-	1,544.7
Capital Equipment	-	55.4	-	55.4
Non-Capital Equipment	190.0	-	-	-
Expenditure Categories Total:	8,118.7	8,424.9	174.0	8,598.9
Medical Examiners Board Fund Total:	8,118.7	8,424.9	174.0	8,598.9

Program Budget Unit Summary of Expenditure and Budget Request for Selected Funds

Agency:	Arizona Medical Board			
	FY 2024 Actuals	FY 2025 Expenditure Plan	FY 2026 Funding Issue	FY 2026 Total Request
Program:	MEA-1-0 Licensing, Regulation, & Rehabilitation			
Sub Program:	MEA-1-1 Licensing, Regulation, & Rehabilitation			
Fund:	ME2038 Medical Examiners Board Fund			
Sub Program Total for Select Funds:	8,118.7	8,424.9	174.0	8,598.9

Program Summary of Expenditure and Budget Request

Agency: Arizona Medical Board

Program: Licensing, Regulation, & Rehabilitation

Program Summary		FY 2024 Actuals	FY 2025 Expenditure Plan	FY 2026 Funding Issue	FY 2026 Total Request
MEA-1-1	Licensing, Regulation, & Rehabilitation	8,118.7	8,424.9	174.0	8,598.9
Licensing, Regulation, & Rehabilitation Summary Total:		8,118.7	8,424.9	174.0	8,598.9

Expenditure Categories		FY 2024 Actuals	FY 2025 Expenditure Plan	FY 2026 Funding Issue	FY 2026 Total Request
FTE	FTE	48.0	63.5	-	63.5
6000	Personal Services	3,580.5	3,915.2	174.0	4,089.2
6100	Employee Related Expenditures	1,276.6	1,578.6	-	1,578.6
Subtotal Personal Services and ERE		4,857.1	5,493.8	174.0	5,667.8
6200	Professional & Outside Services	1,714.1	1,305.0	-	1,305.0
6500	Travel In-State	18.1	13.0	-	13.0
6600	Travel Out-Of-State	11.9	13.0	-	13.0
7000	Other Operating Expenditures	1,327.5	1,544.7	-	1,544.7
8400	Capital Equipment	-	55.4	-	55.4
8500	Non-Capital Equipment	190.0	-	-	-
Expenditure Categories Total:		8,118.7	8,424.9	174.0	8,598.9

Fund Source		FY 2024 Actuals	FY 2025 Expenditure Plan	FY 2026 Funding Issue	FY 2026 Total Request
Appropriated Funds					
ME2038	Medical Examiners Board Fund (Appropriated)	8,118.7	8,424.9	174.0	8,598.9
Appropriated Funds Total:		8,118.7	8,424.9	174.0	8,598.9
Licensing, Regulation, & Rehabilitation Summary Total:		8,118.7	8,424.9	174.0	8,598.9

Program Summary of Expenditure and Budget Request for Selected Funds

Agency: Arizona Medical Board

Program: Licensing, Regulation, & Rehabilitation

Fund: ME2038 Medical Examiners Board Fund (Appropriated)

Program Expenditures		FY 2024 Actuals	FY 2025 Expenditure Plan	FY 2026 Funding Issue	FY 2026 Total Request
MEA-1-1	Licensing, Regulation, & Rehabilitation	8,118.7	8,424.9	174.0	8,598.9
	Medical Examiners Board Fund (Appropriated) Summary Total:	8,118.7	8,424.9	174.0	8,598.9
Appropriated Funding					
6000	Personal Services	3,580.5	3,915.2	174.0	4,089.2
6100	Employee Related Expenditures	1,276.6	1,578.6	-	1,578.6
	Subtotal Personal Services and ERE	4,857.1	5,493.8	174.0	5,667.8
6200	Professional & Outside Services	1,714.1	1,305.0	-	1,305.0
6500	Travel In-State	18.1	13.0	-	13.0
6600	Travel Out-Of-State	11.9	13.0	-	13.0
7000	Other Operating Expenditures	1,327.5	1,544.7	-	1,544.7
8400	Capital Equipment	-	55.4	-	55.4
8500	Non-Capital Equipment	190.0	-	-	-
	Expenditure Categories Total:	8,118.7	8,424.9	174.0	8,598.9
	Fund ME2038 - A Total:	8,118.7	8,424.9	174.0	8,598.9
	Licensing, Regulation, & Rehabilitation Total:	8,118.7	8,424.9	174.0	8,598.9

Program Expenditure Schedule

Agency: Arizona Medical Board

	FY 2024 Actuals	FY 2025 Expenditure Plan	FY 2026 Funding Issue	FY 2026 Total Request
Program: MEA-1-0 Licensing, Regulation, & Rehabilitation				
FTE				
FTE	48.0	63.5	-	63.5
Expenditure Category Total:	-	-	-	-
Fund Source				
Appropriated Funds				
ME2038 Medical Examiners Board Fund (Appropriated)	48.0	63.5	-	63.5
Appropriated Funds Total:	48.0	63.5	-	63.5
Fund Source Total:	48.0	63.5	-	63.5
Personal Services				
Personal Services	3,580.5	3,915.2	174.0	4,089.2
Expenditure Category Total:	3,580.5	3,915.2	174.0	4,089.2
Fund Source				
Appropriated Funds				
ME2038 Medical Examiners Board Fund (Appropriated)	3,580.5	3,915.2	174.0	4,089.2
Appropriated Funds Total:	3,580.5	3,915.2	174.0	4,089.2
Fund Source Total:	3,580.5	3,915.2	174.0	4,089.2
Employee Related Expenditures				
Employee Related Expenses	-	1,578.6	-	1,578.6
FICA Taxes	263.2	-	-	-
Medical Insurance	516.0	-	-	-
Basic Life	0.3	-	-	-
Long-Term Disability (ASRS)	4.9	-	-	-
Dental Insurance	4.2	-	-	-
Workers' Compensation	21.4	-	-	-
Arizona State Retirement System	398.0	-	-	-
Alternate Retirement Contributions – Reemployed Retirees	2.4	-	-	-
Personnel Board Pro-Rata Charges	30.8	-	-	-
Information Technology Pro Rata Charge	21.8	-	-	-
Accumulated Sick Leave Fund Charge	13.6	-	-	-

Program Expenditure Schedule

Agency: Arizona Medical Board

	FY 2024 Actuals	FY 2025 Expenditure Plan	FY 2026 Funding Issue	FY 2026 Total Request
Program: MEA-1-0 Licensing, Regulation, & Rehabilitation				
Expenditure Category Total:	1,276.6	1,578.6	-	1,578.6

Fund Source

Appropriated Funds

ME2038 Medical Examiners Board Fund (Appropriated)	1,276.6	1,578.6	-	1,578.6
Appropriated Funds Total:	1,276.6	1,578.6	-	1,578.6
Fund Source Total:	1,276.6	1,578.6	-	1,578.6

Professional & Outside Services

Professional and Outside Services	-	1,305.0	-	1,305.0
Attorney General Legal Services	611.0	-	-	-
External Legal Services	20.7	-	-	-
Other Design	1.6	-	-	-
Temporary Agency Services	653.7	-	-	-
Other Medical Services	274.7	-	-	-
Education & Training	0.1	-	-	-
External Information and Communications Technology Consulting Services	134.9	-	-	-
Other Professional & Outside Services	17.3	-	-	-
Expenditure Category Total:	1,714.1	1,305.0	-	1,305.0

Fund Source

Appropriated Funds

ME2038 Medical Examiners Board Fund (Appropriated)	1,714.1	1,305.0	-	1,305.0
Appropriated Funds Total:	1,714.1	1,305.0	-	1,305.0
Fund Source Total:	1,714.1	1,305.0	-	1,305.0

Travel In-State

Travel In-State	-	13.0	-	13.0
Mileage - Private Vehicle	10.0	-	-	-
Lodging	5.0	-	-	-
Meals with Overnight Stay	2.1	-	-	-
Meals without Overnight Stay	0.9	-	-	-
Other Miscellaneous In- State Travel	0.0	-	-	-
Expenditure Category Total:	18.1	13.0	-	13.0

Program Expenditure Schedule

Agency: **Arizona Medical Board**

	FY 2024 Actuals	FY 2025 Expenditure Plan	FY 2026 Funding Issue	FY 2026 Total Request
--	--------------------	--------------------------------	-----------------------------	-----------------------------

Program: **MEA-1-0 Licensing, Regulation, & Rehabilitation**

Fund Source

Appropriated Funds

ME2038	Medical Examiners Board Fund (Appropriated)	18.1	13.0	-	13.0
Appropriated Funds Total:		18.1	13.0	-	13.0
Fund Source Total:		18.1	13.0	-	13.0

Travel Out-Of-State

Travel Out of State	-	13.0	-	13.0
Airfare and Other Common Carrier Charges	3.7	-	-	-
Lodging Out-of-State	7.1	-	-	-
Meals with Overnight Stay	0.7	-	-	-
Meals without Overnight Stay	0.1	-	-	-
Other Miscellaneous Out-of- State Travel	0.3	-	-	-
Expenditure Category Total:	11.9	13.0	-	13.0

Fund Source

Appropriated Funds

ME2038	Medical Examiners Board Fund (Appropriated)	11.9	13.0	-	13.0
Appropriated Funds Total:		11.9	13.0	-	13.0
Fund Source Total:		11.9	13.0	-	13.0

Other Operating Expenditures

Other Operating Expenses	-	1,544.7	-	1,544.7
Risk Management Charges to State Agencies	16.0	-	-	-
Internal Service Computer Processing, Hosting, Maintenance and Support Costs	14.2	-	-	-
External Programming and System Development Costs	34.2	-	-	-
Charges Imposed Related to AFIS.	17.3	-	-	-
External Telecommunications Charges	97.1	-	-	-
Building Rent Charges to State Agencies	212.3	-	-	-
Miscellaneous Rent	1.0	-	-	-

Program Expenditure Schedule

Agency: **Arizona Medical Board**

	FY 2024 Actuals	FY 2025 Expenditure Plan	FY 2026 Funding Issue	FY 2026 Total Request
Program: MEA-1-0 Licensing, Regulation, & Rehabilitation				
Internal Accounting, Budgeting & Financial Services	13.1	-	-	-
Repair & Maintenance - Buildings	0.3	-	-	-
Repair & Maintenance - Other Equipment	6.4	-	-	-
Repair & Maintenance - Other	9.4	-	-	-
Software Support, Maintenance Short-term Licensing	756.1	-	-	-
Office Supplies	29.6	-	-	-
Computer Supplies	0.1	-	-	-
Other Operating Supplies	15.1	-	-	-
Employee Tuition Reimbursement	0.0	-	-	-
Conference Registration / Attendance Fees	0.3	-	-	-
Other Education & Training Costs	16.2	-	-	-
Internal Printing	4.6	-	-	-
External Printing	5.7	-	-	-
Postage & Delivery	30.5	-	-	-
Document Shredding and Destruction Services	2.1	-	-	-
Awards	0.2	-	-	-
Dues	2.2	-	-	-
Books, Subscriptions & Publications	11.3	-	-	-
Security Services	13.9	-	-	-
Other Miscellaneous Operating	18.1	-	-	-
Expenditure Category Total:	1,327.5	1,544.7	-	1,544.7

Fund Source

Appropriated Funds

ME2038	Medical Examiners Board Fund (Appropriated)	1,327.5	1,544.7	-	1,544.7
Appropriated Funds Total:		1,327.5	1,544.7	-	1,544.7
Fund Source Total:		1,327.5	1,544.7	-	1,544.7

Capital Equipment

Capital Equipment	-	55.4	-	55.4
Expenditure Category Total:	-	55.4	-	55.4

Fund Source

Program Expenditure Schedule

Agency: Arizona Medical Board

	FY 2024 Actuals	FY 2025 Expenditure Plan	FY 2026 Funding Issue	FY 2026 Total Request
Program: MEA-1-0 Licensing, Regulation, & Rehabilitation				
Appropriated Funds				
ME2038 Medical Examiners Board Fund (Appropriated)	-	55.4	-	55.4
Appropriated Funds Total:	-	55.4	-	55.4
Fund Source Total:	-	55.4	-	55.4

Non-Capital Equipment

Furniture - Non-Capital Purchase	0.9	-	-	-
Computer Equipment – Non- Capitalized Purchases	45.0	-	-	-
Purchased or licensed software / website	144.1	-	-	-
Expenditure Category Total:	190.0	-	-	-

Fund Source

Appropriated Funds				
ME2038 Medical Examiners Board Fund (Appropriated)	190.0	-	-	-
Appropriated Funds Total:	190.0	-	-	-
Fund Source Total:	190.0	-	-	-

Employee Retirement Coverage

Retirement System	FTE	Personal Services	Fund#
Arizona State Retirement System	63.5	3,915.2	ME2038-A

Sub Program: MEA-1-1 Licensing, Regulation, & Rehabilitation

Program Expenditure Schedule

Agency: Arizona Medical Board

	FY 2024 Actuals	FY 2025 Expenditure Plan	FY 2026 Funding Issue	FY 2026 Total Request
--	--------------------	--------------------------------	-----------------------------	-----------------------------

Program: MEA-1-0 Licensing, Regulation, & Rehabilitation

Sub Program: MEA-1-1 Licensing, Regulation, & Rehabilitation

FTE

FTE	48.0	63.5	-	63.5
Expenditure Category Total:	-	-	-	-

Fund Source

Appropriated Funds

ME2038 Medical Examiners Board Fund (Appropriated)	48.0	63.5	-	63.5
Appropriated Funds Total:	48.0	63.5	-	63.5
Fund Source Total:	48.0	63.5	-	63.5

Personal Services

Personal Services	3,580.5	3,915.2	174.0	4,089.2
Expenditure Category Total:	3,580.5	3,915.2	174.0	4,089.2

Fund Source

Appropriated Funds

ME2038 Medical Examiners Board Fund (Appropriated)	3,580.5	3,915.2	174.0	4,089.2
Appropriated Funds Total:	3,580.5	3,915.2	174.0	4,089.2
Fund Source Total:	3,580.5	3,915.2	174.0	4,089.2

Program Expenditure Schedule

Agency: Arizona Medical Board

	FY 2024 Actuals	FY 2025 Expenditure Plan	FY 2026 Funding Issue	FY 2026 Total Request
Program: MEA-1-0 Licensing, Regulation, & Rehabilitation				
Sub Program: MEA-1-1 Licensing, Regulation, & Rehabilitation				

Employee Related Expenditures

Employee Related Expenses	-	1,578.6	-	1,578.6
FICA Taxes	263.2	-	-	-
Medical Insurance	516.0	-	-	-
Basic Life	0.3	-	-	-
Long-Term Disability (ASRS)	4.9	-	-	-
Dental Insurance	4.2	-	-	-
Workers' Compensation	21.4	-	-	-
Arizona State Retirement System	398.0	-	-	-
Alternate Retirement Contributions – Reemployed Retirees	2.4	-	-	-
Personnel Board Pro-Rata Charges	30.8	-	-	-
Information Technology Pro Rata Charge	21.8	-	-	-
Accumulated Sick Leave Fund Charge	13.6	-	-	-
Expenditure Category Total:	1,276.6	1,578.6	-	1,578.6

Fund Source

Appropriated Funds

ME2038 Medical Examiners Board Fund (Appropriated)	1,276.6	1,578.6	-	1,578.6
Appropriated Funds Total:	1,276.6	1,578.6	-	1,578.6
Fund Source Total:	1,276.6	1,578.6	-	1,578.6

Program Expenditure Schedule

Agency: Arizona Medical Board

	FY 2024 Actuals	FY 2025 Expenditure Plan	FY 2026 Funding Issue	FY 2026 Total Request
Program: MEA-1-0 Licensing, Regulation, & Rehabilitation				

Sub Program: MEA-1-1 Licensing, Regulation, & Rehabilitation

Professional & Outside Services

Professional and Outside Services	-	1,305.0	-	1,305.0
Attorney General Legal Services	611.0	-	-	-
External Legal Services	20.7	-	-	-
Other Design	1.6	-	-	-
Temporary Agency Services	653.7	-	-	-
Other Medical Services	274.7	-	-	-
Education & Training	0.1	-	-	-
External Information and Communications Technology Consulting Services	134.9	-	-	-
Other Professional & Outside Services	17.3	-	-	-
Expenditure Category Total:	1,714.1	1,305.0	-	1,305.0

Fund Source

Appropriated Funds

ME2038 Medical Examiners Board Fund (Appropriated)	1,714.1	1,305.0	-	1,305.0
Appropriated Funds Total:	1,714.1	1,305.0	-	1,305.0
Fund Source Total:	1,714.1	1,305.0	-	1,305.0

Program Expenditure Schedule

Agency: Arizona Medical Board

	FY 2024 Actuals	FY 2025 Expenditure Plan	FY 2026 Funding Issue	FY 2026 Total Request
Program: MEA-1-0 Licensing, Regulation, & Rehabilitation				

Sub Program: MEA-1-1 Licensing, Regulation, & Rehabilitation

Travel In-State

Travel In-State	-	13.0	-	13.0
Mileage - Private Vehicle	10.0	-	-	-
Lodging	5.0	-	-	-
Meals with Overnight Stay	2.1	-	-	-
Meals without Overnight Stay	0.9	-	-	-
Other Miscellaneous In- State Travel	0.0	-	-	-
Expenditure Category Total:	18.1	13.0	-	13.0

Fund Source

Appropriated Funds

ME2038 Medical Examiners Board Fund (Appropriated)	18.1	13.0	-	13.0
Appropriated Funds Total:	18.1	13.0	-	13.0
Fund Source Total:	18.1	13.0	-	13.0

Travel Out-Of-State

Travel Out of State	-	13.0	-	13.0
Airfare and Other Common Carrier Charges	3.7	-	-	-
Lodging Out-of-State	7.1	-	-	-
Meals with Overnight Stay	0.7	-	-	-
Meals without Overnight Stay	0.1	-	-	-
Other Miscellaneous Out-of- State Travel	0.3	-	-	-
Expenditure Category Total:	11.9	13.0	-	13.0

Fund Source

Appropriated Funds

ME2038 Medical Examiners Board Fund (Appropriated)	11.9	13.0	-	13.0
Appropriated Funds Total:	11.9	13.0	-	13.0
Fund Source Total:	11.9	13.0	-	13.0

Other Operating Expenditures

Other Operating Expenses	-	1,544.7	-	1,544.7
--------------------------	---	---------	---	---------

Program Expenditure Schedule

Agency:	Arizona Medical Board
----------------	------------------------------

	FY 2024 Actuals	FY 2025 Expenditure Plan	FY 2026 Funding Issue	FY 2026 Total Request
Program: MEA-1-0 Licensing, Regulation, & Rehabilitation				
Sub Program: MEA-1-1 Licensing, Regulation, & Rehabilitation				

Risk Management Charges to State Agencies	16.0	-	-	-
Internal Service Computer Processing, Hosting, Maintenance and Support Costs	14.2	-	-	-
External Programming and System Development Costs	34.2	-	-	-
Charges Imposed Related to AFIS.	17.3	-	-	-
External Telecommunications Charges	97.1	-	-	-
Building Rent Charges to State Agencies	212.3	-	-	-
Miscellaneous Rent	1.0	-	-	-
Internal Accounting, Budgeting & Financial Services	13.1	-	-	-
Repair & Maintenance - Buildings	0.3	-	-	-
Repair & Maintenance - Other Equipment	6.4	-	-	-
Repair & Maintenance - Other	9.4	-	-	-
Software Support, Maintenance Short-term Licensing	756.1	-	-	-
Office Supplies	29.6	-	-	-
Computer Supplies	0.1	-	-	-
Other Operating Supplies	15.1	-	-	-
Employee Tuition Reimbursement	0.0	-	-	-
Conference Registration / Attendance Fees	0.3	-	-	-
Other Education & Training Costs	16.2	-	-	-
Internal Printing	4.6	-	-	-
External Printing	5.7	-	-	-
Postage & Delivery	30.5	-	-	-
Document Shredding and Destruction Services	2.1	-	-	-
Awards	0.2	-	-	-
Dues	2.2	-	-	-
Books, Subscriptions & Publications	11.3	-	-	-
Security Services	13.9	-	-	-
Other Miscellaneous Operating	18.1	-	-	-
Expenditure Category Total:	1,327.5	1,544.7	-	1,544.7

Fund Source

Program Expenditure Schedule

Agency: Arizona Medical Board

	FY 2024 Actuals	FY 2025 Expenditure Plan	FY 2026 Funding Issue	FY 2026 Total Request
--	--------------------	--------------------------------	-----------------------------	-----------------------------

Program: MEA-1-0 Licensing, Regulation, & Rehabilitation

Sub Program: MEA-1-1 Licensing, Regulation, & Rehabilitation

Appropriated Funds

ME2038	Medical Examiners Board Fund (Appropriated)	1,327.5	1,544.7	-	1,544.7
Appropriated Funds Total:		1,327.5	1,544.7	-	1,544.7
Fund Source Total:		1,327.5	1,544.7	-	1,544.7

Capital Equipment

Capital Equipment	-	55.4	-	55.4
Expenditure Category Total:	-	55.4	-	55.4

Fund Source

Appropriated Funds

ME2038	Medical Examiners Board Fund (Appropriated)	-	55.4	-	55.4
Appropriated Funds Total:		-	55.4	-	55.4
Fund Source Total:		-	55.4	-	55.4

Non-Capital Equipment

Furniture - Non-Capital Purchase	0.9	-	-	-
Computer Equipment – Non- Capitalized Purchases	45.0	-	-	-
Purchased or licensed software / website	144.1	-	-	-
Expenditure Category Total:	190.0	-	-	-

Fund Source

Appropriated Funds

ME2038	Medical Examiners Board Fund (Appropriated)	190.0	-	-	-
Appropriated Funds Total:		190.0	-	-	-
Fund Source Total:		190.0	-	-	-

Employee Retirement Coverage

	FTE	Personal Services	Fund#
Arizona State Retirement System	63.5	63.5	ME2038-A

Program Expenditure Schedule

Agency:	Arizona Medical Board
----------------	------------------------------

	FY 2024 Actuals	FY 2025 Expenditure Plan	FY 2026 Funding Issue	FY 2026 Total Request
--	--------------------	--------------------------------	-----------------------------	-----------------------------

Program:	MEA-1-0 Licensing, Regulation, & Rehabilitation
-----------------	--

Program Expenditure Schedule

Agency:	Arizona Medical Board
----------------	------------------------------

Administrative Costs Summary	FY 2026
Personal Services	319.8
ERE	110.6
All Other	45.0
Administrative Costs Total:	475.4

Administrative Costs / Total Expenditure Ratio	Request	Admin %
FY 2026	8,598.9	5.5%

Explore Plans

P 0 MEA Arizona Medical Board

- G 1 MEA-G001 To increase activities devoted to addressing public safety, healthcare and regulatory issues of importance to licensees, stakeholders, and the general public through collaboration with others, policy making and information dissemination.
 - P 1 MEA-PM0002 Number of substantive policy statements, guidelines, rules, or rule revisions adopted
 - P 2 MEA-PM0003 Number of instances where a Board or staff member attends a professional training event relevant to the Board's functions and or the appropriate delivery of healthcare.
 - P 3 MEA-PM0001 Number of public awareness activities, training opportunities, and other public notifications published on the Board website or transmitted to licensees via e-mail blasts.
- G 2 MEA-G002 To improve efficiency processes related to licensing, regulatory, and information dissemination through the successful application of e-licensing and the automated features of the available database.
 - P 1 MEA-PM0004 Average time to approve an MD license from receipt of application.
 - P 2 MEA-PM0005 Average number of days to complete a medical doctor investigation
 - P 3 MEA-PM0006 Average time to approve a PA license from receipt of application.
 - P 4 MEA-PM0007 Average number of days to complete a physician assistant investigation
 - P 5 MEA-PM0008 Average number of days to process an initial medical doctor license upon receipt of completed application
 - P 6 MEA-PM0009 Average number of days to resolve a medical doctor case
 - P 7 MEA-PM0010 Average number of days to resolve a physician assistant case
 - P 8 MEA-PM0011 Average score of agency-wide customer service satisfaction surveys (scale of 1-8)
 - P 9 MEA-PM0012 Medical doctor cases referred to formal hearing

P 1 MEA-1-0 Licensing, Regulation, & Rehabilitation

- S 1 MEA-1-1 Licensing, Regulation, & Rehabilitation
- S 2 MEA-1-2 SLI Employee Performance Incentive Program